

Washington

TOWNES

901 Washington Street Denver, CO 80203

Washington Townes Community Plans

Alley



NINTH AVENUE CORNER PLAN



Corresponds to Unit 5 and 10

Approximate Finished Size: Unit 5: 1,780 Square Feet Unit 10: 1,778 Square Feet

Approximate Living Area Size Including Balconies, Rooftop Deck: Unit 5: 2,186 Square Feet
Unit 10: 2,675 Square Feet

WASHINGTON AVENUE REAR TOWNE PLAN



Corresponds to: Units 7, 8, and 9

Approximate Finished Size: 2,000 Square Feet

Approximate Living Area Size Including Balconies, Rooftop Deck: 2,290 Square Feet

STREETFRONT TOWNE PLAN

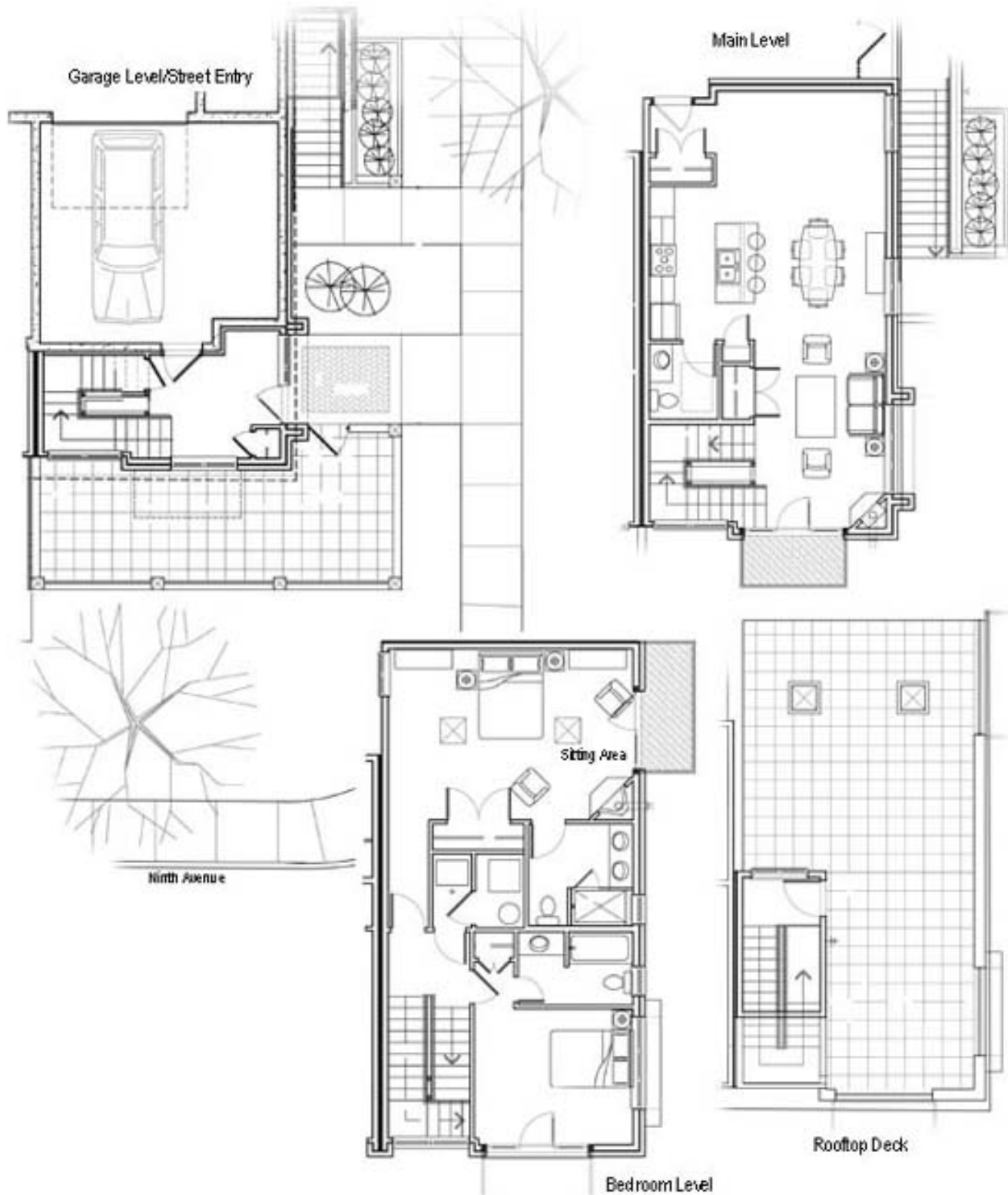


Corresponds to Units 2, 3, and 4

Approximate Finished Size: 2,000 Square Feet

Approximate Living Area Size Including Balconies, Rooftop Deck: 2,290 Square Feet

WASHINGTON STREET TOWNE PLAN



Corresponds to Unit 1 and 6

Approximate Finished Size: Unit 1: 1,854 Square Feet Unit 6: 1,943 Square Feet

Approximate Living Area Size Including Balconies, Rooftop Deck: Unit 1: 2,613 Square Feet
Unit 6: 2,665 Square Feet

© 2009 Washington Townes Townes. Prices in effect March 2009. Prices and plans are subject to change without notice. Renderings and size representations are approximations and may be altered during continued design and construction.